



## Parts list

### POWER SHREDDER Cum MULCHER SPINEL 200

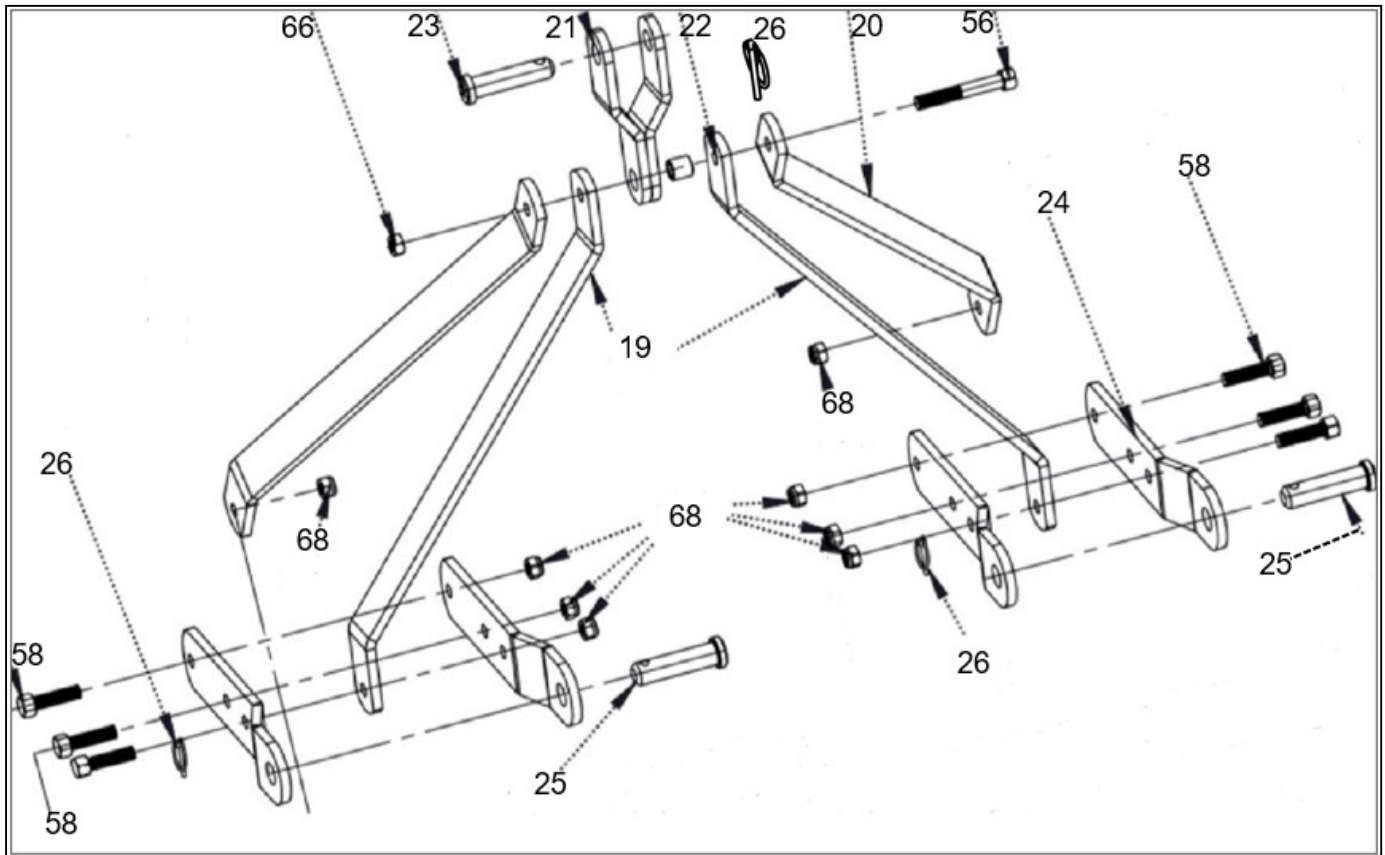


---

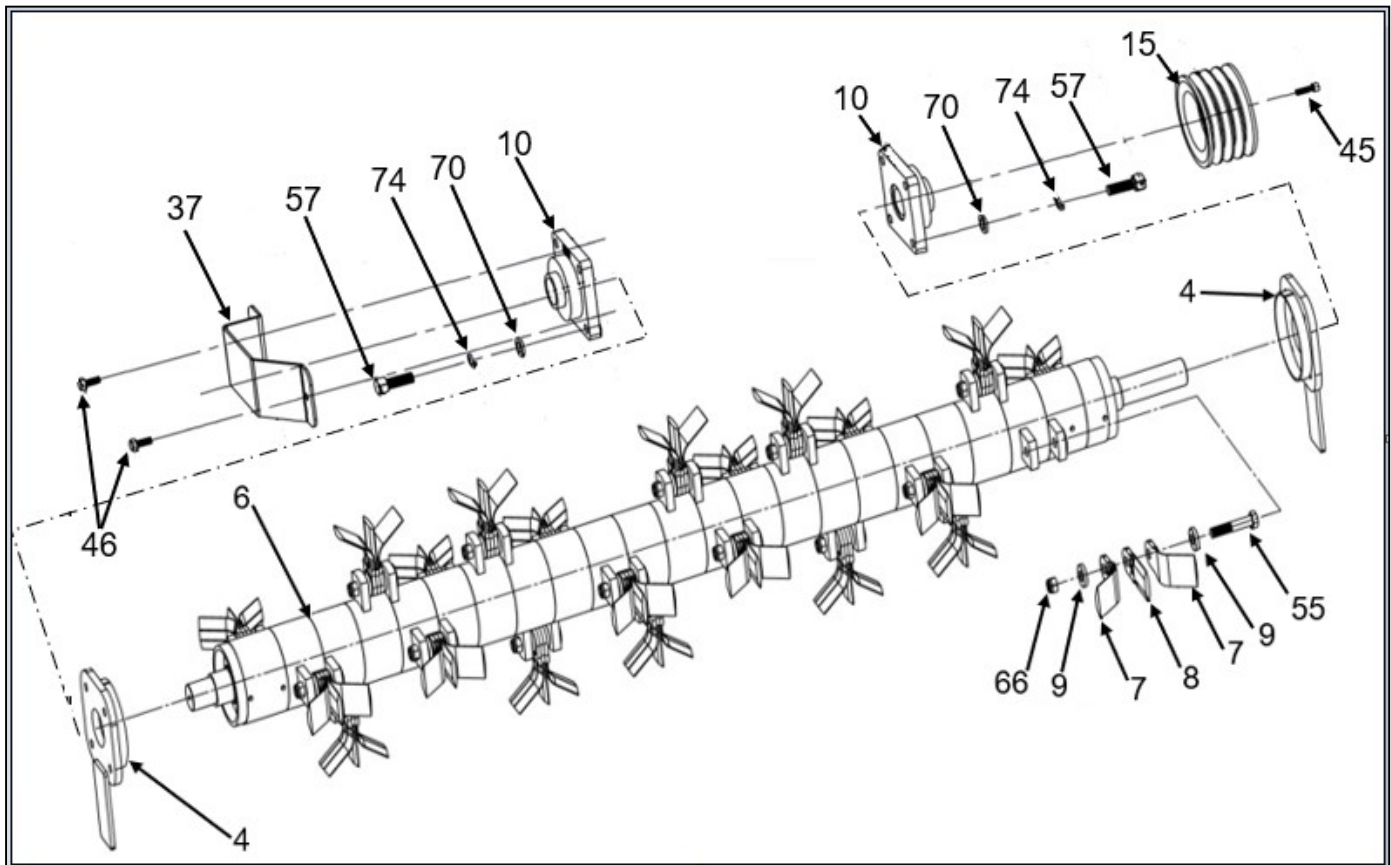
#### LEMKEN India Agro Equipment Pvt Ltd.

Plot No. D-59, MIDC,  
Butibori, Nagpur - 441108,  
Maharashtra, India  
Phone: +91 - 7104-305400  
E-Mail: [lemkenindia@lemken.com](mailto:lemkenindia@lemken.com)  
E-Mail: [customercare.india@lemken.com](mailto:customercare.india@lemken.com)

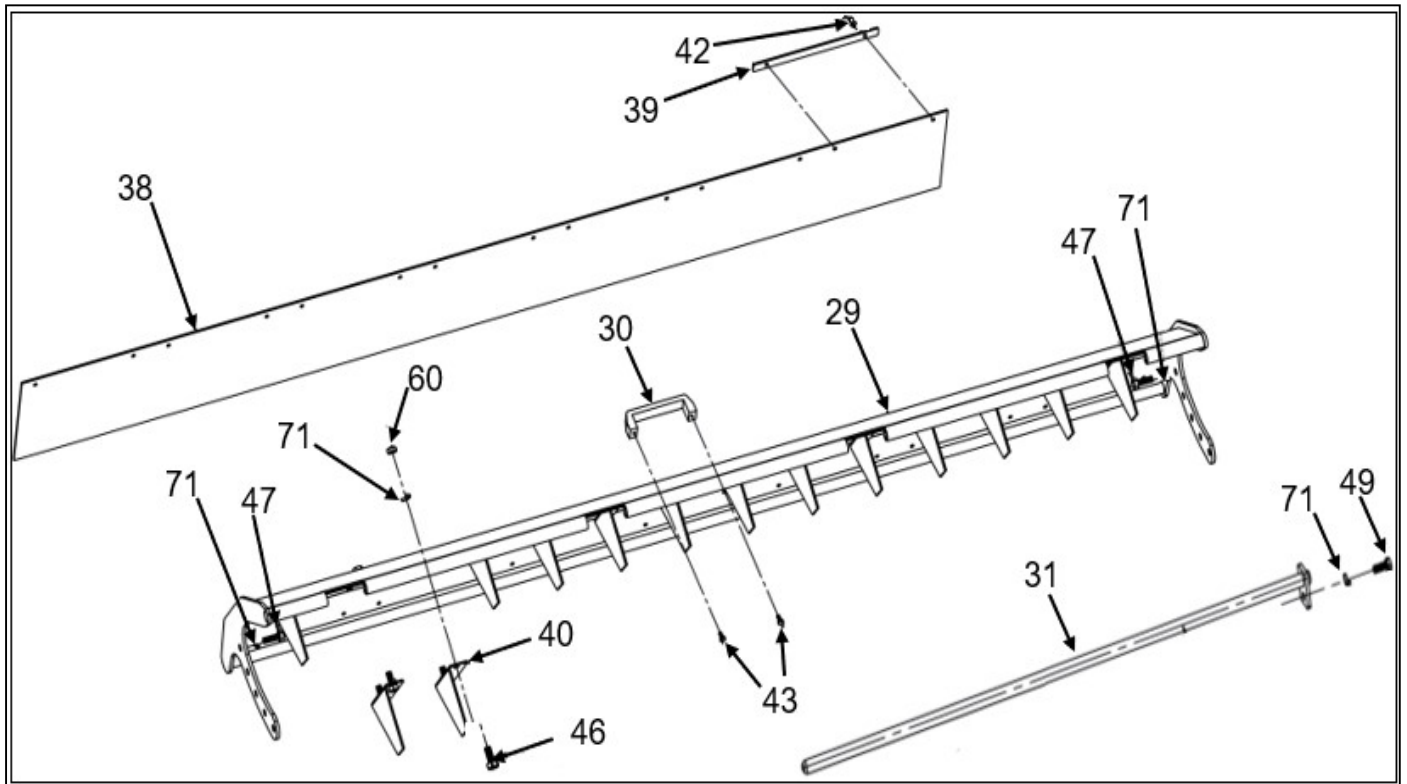
Art.Nr. 17515495  
12.21



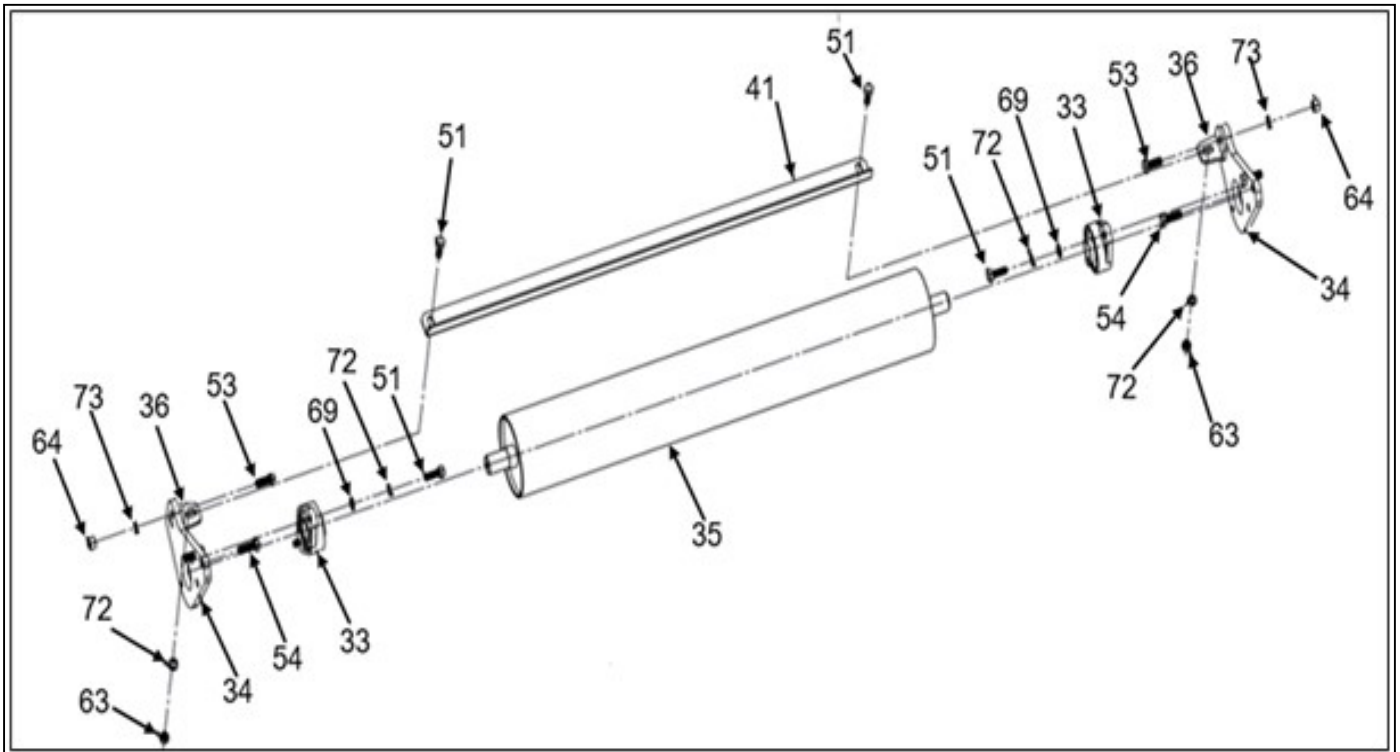
Position	Part No	Part Description	Qty
19	SH ZM C 19 H 0 0 01 0	Front Arm For Top 3P Hitch	2
20	SH ZM C 19 H 0 0 02 0	Rear Arm For Top 3P Hitch	2
21	SH CM C 16 H 3 0 00 0	Top 3P Hitch Bracket	1
22	SH CM C 16 H 1 0 03 0	Bush For Top 3P Hitch Bracket	1
23	RV CM C 18 H 0 0 02 0	Top Hitch Pin CM	1
24	SH ZM C 19 H 2 0 01 0	Arm For Bottom Hitch	4
25	RV CM C 18 H 0 0 01 0	Bottom Hitch Pin CM	2
26	PN 0 080LN054L Z	Linch pin 8mm	3
56	BO 3 HM161105H B	Bolt M16x1.5X110L-Class 10.9 grade,HT	1
58	BO 3 HM160607H B	Bolt M16x2X60L-Class 8.8,HT,Black Oxide	6
66	NU 4 HM16T513S Z	Nut M16x1.5- Class 10,Hex Nut	23
68	NU 3 HM16N713S Z	Nut M16x2- Class 8, Hex Nut , Nylock Inserted	8



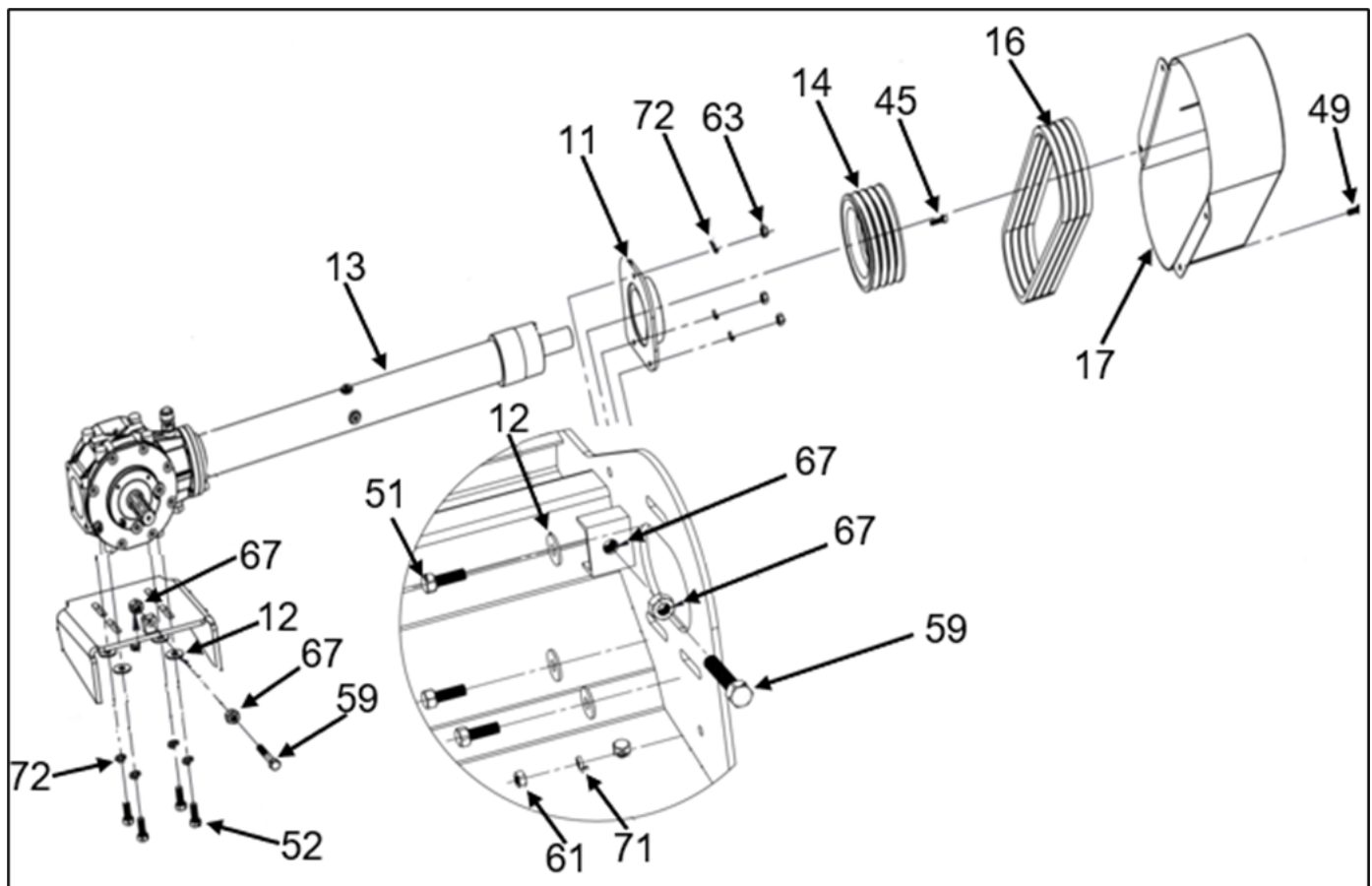
Position	Part No	Part Description	Qty
4	SH ZM C 19 R 1 0 00 0	Assembling Rotor Mounting Flange Drive & Driven Side	2
6	SH ZM C 19 R 2 0 00 0	Assembling Rotor Pipe With Brackets	1
7	SH ZM C 19 R 0 0 01 0	J-Blade	44
8	SH ZM C 19 R 0 0 02 0	Straight Blade	22
9	SH ZM C 19 R 0 0 03 0	Spacer Bush	44
10	BR 0 UCF2090000 0	Bearing UCF 209	2
15	SH CM C 16 T 2 2 00 0	Driven Pulley Assembly	1
37	SH CM C 16 P 0 0 05 0	Bearing Guard	1
45	BO 5 AM080254F Z	Bolt Allen M8x1.25x25 L, Class.-12.9,FT,Zinc Plated	14
46	BO 3 HM100254F Z	Bolt M10x1.25X25L-Class 10.9,FT,Zinc Plated	37
55	BO 4 HM161005H Z	Bolt M16x1.5X100L-Class 10.9 grade,HT,	22
57	BO 3 HM160457F B	Bolt M16x2x45L-Class 8.8, FT, Black Oxide	10
66	NU 4 HM16T513S Z	Nut M16x1.5- Class 10,Hex Nut	23
70	WS 0 PM183004t Z	Washer Plain M16, 18X30X4t ,Zinc Plated	8
74	WS 0 SM172504t B	Washer Spring M16X25.5x4t, Black Oxide	8



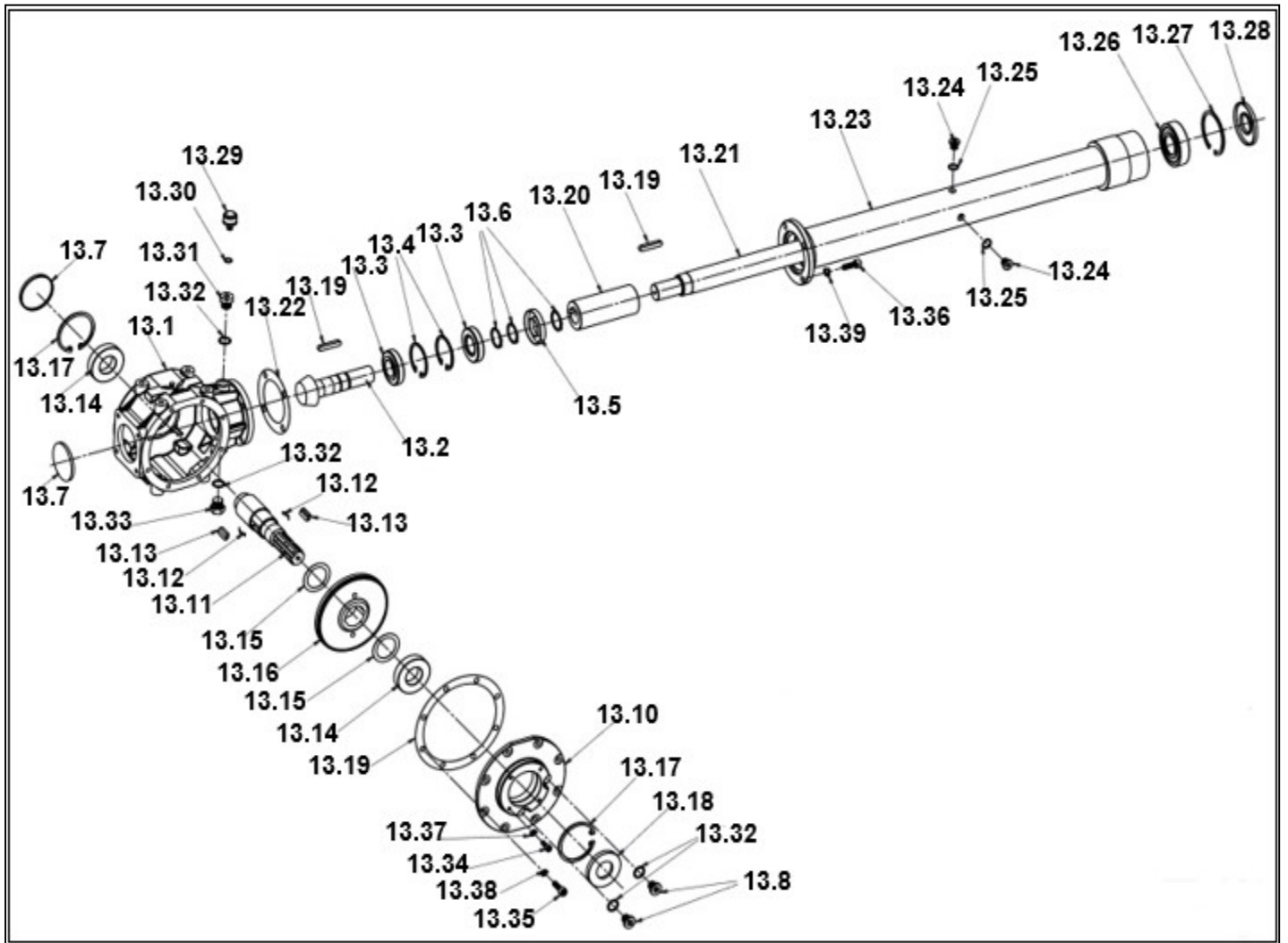
Position	Part No	Part Description	Qty
29	SH ZM C 19 B 1 0 00 0	Assembling Bonnet	1
30	SH ZM C 19 A 0 0 03 0	Bonnet Handle	1
31	SH ZM C 19 B 2 0 00 0	Assembling Rod	1
38	SH ZM C 19 A 0 0 04 0	Skirting Belt	1
39	SH ZM C 19 A 0 0 05 0	Flat For Skirting Belt	7
40	SH ZM C 19 A 0 0 06 0	Counter Blade	14
42	PR 1 BSDM06010 0	Aluminium Pop Rivets	14
43	BO 3 HM060203F Z	Bolt M6x1.0X15L-Class 8.8,FT,Zinc Plated	2
46	BO 3 HM100254F Z	Bolt M10x1.25X25L-Class 10.9,FT,Zinc Plated	37
47	BO 4 HM100304F Z	Bolt M10x1.25X30L-Class 10.9,FT,Zinc Plated	6
49	BO 3 HM100255F B	Bolt M10x1.5X25L-Class 8.8,FT,Black Oxide	6
60	NU 4 HM10P408S B	Nut M10x1.25-Class 10.9,Black oxide	47
71	WS 0 SM111704t B	Washer Spring M10X11x4t, Black Oxide	51



Position	Part No	Part Description	Qty
33	BR 0 UCF2070000 0	Bearing For Roller UCFL 207	2
34	SH ZM C 19 A 6 0 01 0	Roller Mounting Plate Drive & Driven Side	2
35	SH ZM C 19 A 6 1 00 0	Assembling Roller	1
36	SH ZM C 19 A 6 3 00 0	Bracket Subassembly	2
41	SH ZM C 19 A 0 0 08 0	Tie Angle 50X30X1862X4t	1
51	BO 4 HM120354F Z	Bolt M12x1.25X35L-Class 10.9, FT, Zinc Plated	9
53	BO 3 HM140355F B	Bolt M14 x1.5x35L-Class 8.8, FT, Black Oxide	2
54	BO 3 HM140405F Z	Bolt M14 x1.5x40L-Class 8.8, FT, Zinc Plated	6
63	NU 4 HM12T410S Z	Nut M12x1.25 - Class 10 , Zinc Plated	5
64	NU 3 HM14N511S Z	Nut M14x1.5- Class 8, Hex Nut, Nylock Inserted	2
69	WS 0 PM132403t Z	Washer Plain M12x24x3t,Zinc plated	4
72	WS 0 SM131904t B	Washer Spring M12X19.5x4t, Black Oxide	27
73	WS 0 SM152604t Z	Washer Spring M14x26x4t, Zinc Plated	2

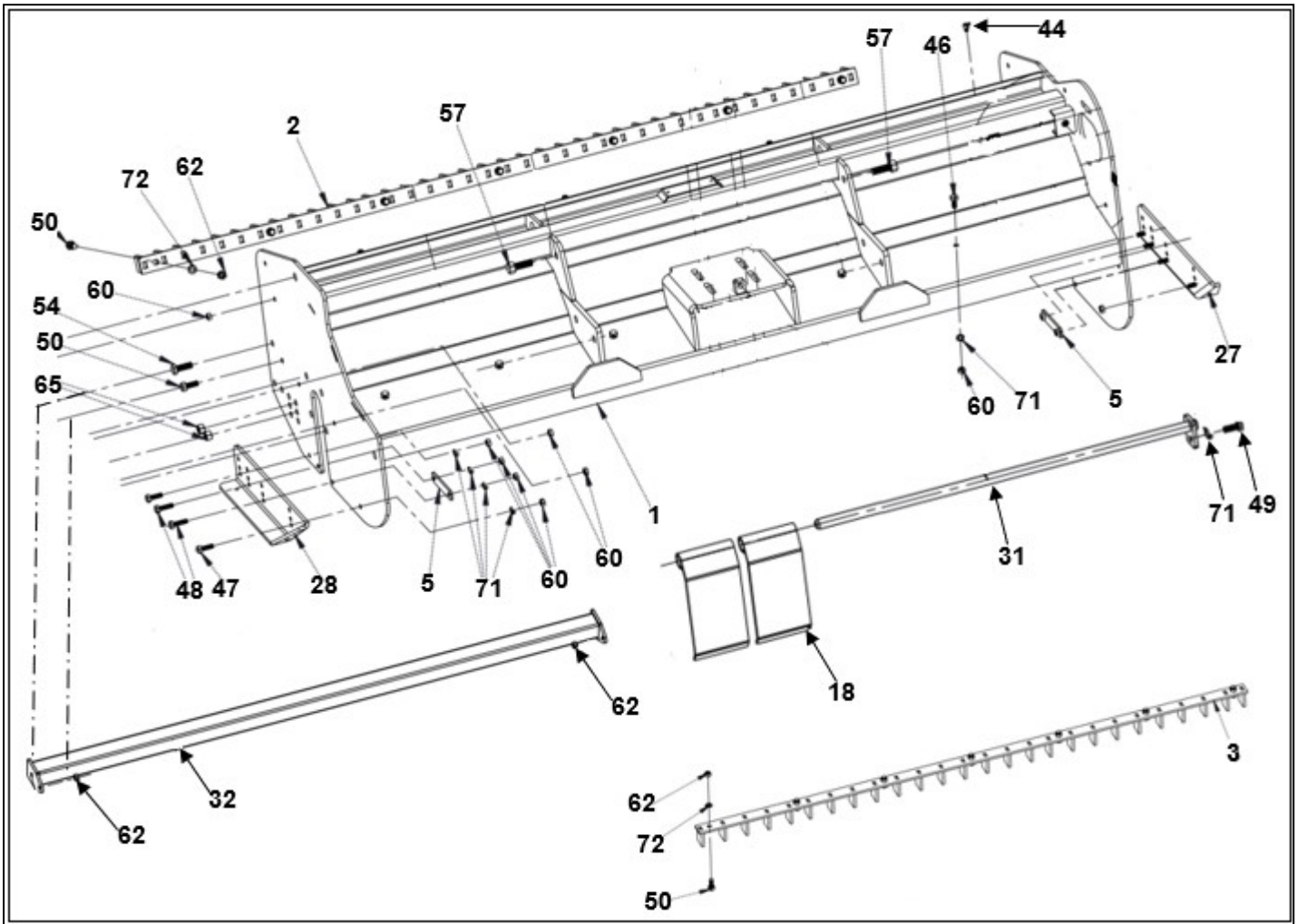


Position	Part No	Part Description	Qty
11	SH ZM C 19 T 3 0 00 0	Assembling Jackshaft Mounting	1
12	SH ZM C 19 T 3 0 03 0	Washer For Assembling Jackshaft Mounting	7
13	SH ZM C 19 T 1 0 00 0	Assembling Gearbox & Jackshaft (X4=1018.5)	1
14	SH ZM C 19 T 2 1 00 0	Drive Pulley Assembly	1
16	XPB1422	Cog Belt, XPB1422	4
17	SH ZM C 19 T 2 0 00 0	Assembling Belt Safety Guard	1
45	BO 5 AM080254F Z	Bolt Allen M8x1.25x25 L, Class.-12.9,FT,Zinc Plated	14
49	BO 3 HM100254F Z	Bolt M10x1.25X25L-Class 10.9,FT,Zinc Plated	37
51	BO 4 HM120354F Z	Bolt M12x1.25X35L-Class 10.9, FT, Zinc Plated	9
52	BO 4 HM120506F Z	Bolt M12x1.75X35L-Class 10.9, FT, Zinc Plated	4
59	BO 3 HM160807F B	Bolt M16x2X80L-Class 8.8 grade, FT, Black Oxide	2
61	NU 3 HM10P508S B	Nut M10X1.5 - Class 8, Hex Nut	4
67	NU 3 HM16P713S B	Nut M16x2- Class 8,Hex Nut, Heavy Nut, TVS Make	4
71	WS 0 SM111704t B	Washer Spring M10X11x4t, Black Oxide	51
72	WS 0 SM131904t B	Washer Spring M12X19.5x4t, Black Oxide	27
75	LB O GSAE14000 0	Gearbox & Jackshaft casing pipe Oil SAE 140	2.5 lit

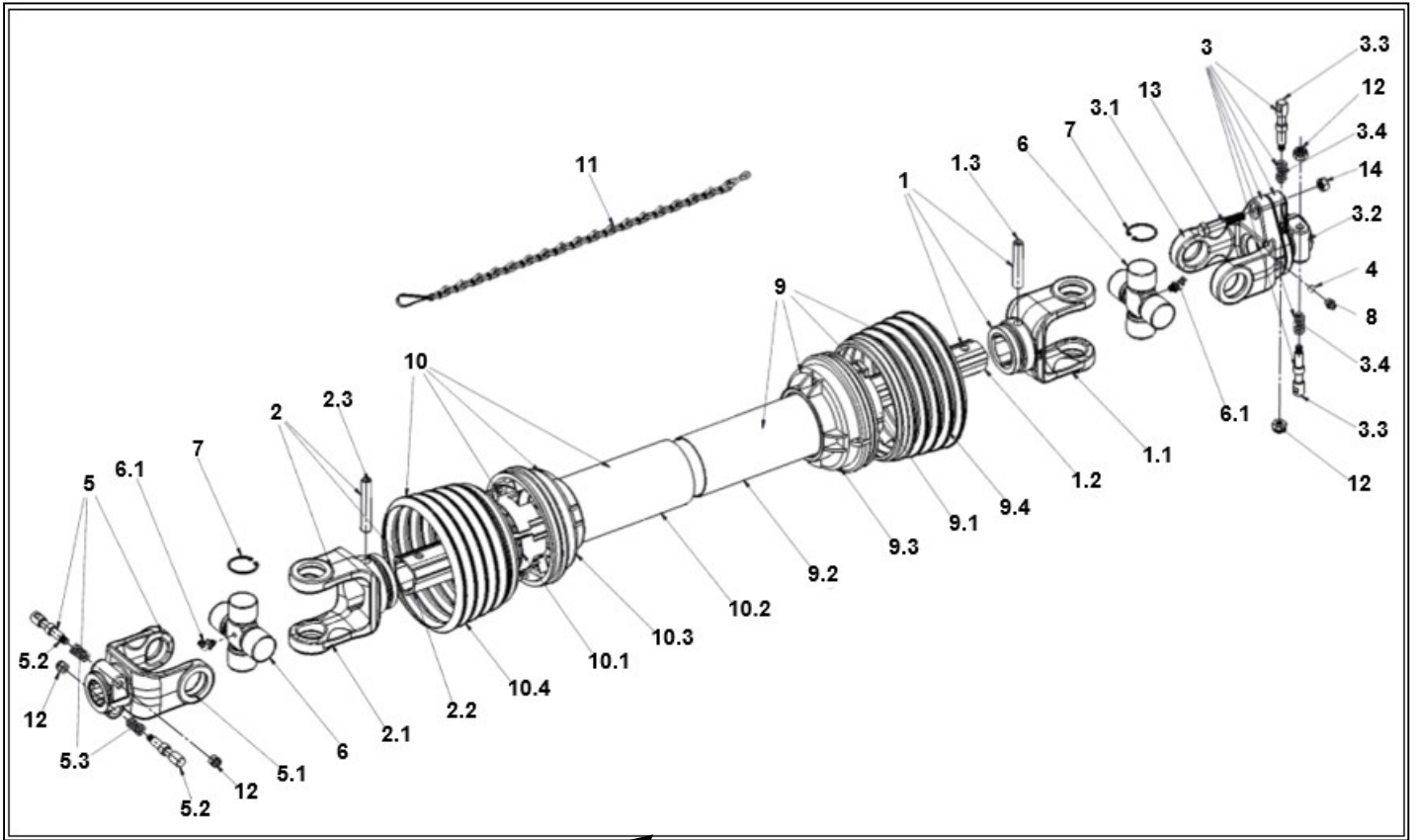


Position	Part No	Part Description	Qty
13.1	SH ZM C 19 T 1 1 01 0	Gearbox Housing Machining	1
13.2	SH ZM C 19 T 1 1 02 0	Z 11 Spiral Bevel Pinion Shaft	1
13.3	BR 0 302070000 0	Bearing No. 30207	2
13.4	CR 0 I072B25t0 0	Internal Circlip,72x2.5t	2
13.5	SL S O03507212 0	Oil Seal 35x72x12	1
13.6	CR 0 E035B15t0 0	External Circlip,35x1.5t	3
13.7	SL N C00008010 0	Seal Cap For Housing	2
13.8	PG D MSABSP120 Z	Drain Plug, 1/2" BSPT, MS Allen Head, Steel	2
13.9	SH CM C 16 T 1 0 01 0	Gasket For Adapter	1
13.10	SH ZM C 19 T 1 2 01 0	Gearbox Front Cover	1
13.11	SH ZM C 19 T 1 2 02 0	Gearbox Input Shaft	1
13.12	SH CM C 16 T 1 2 03 0	Spring For Ratchet Key	2
13.13	SH CM C 16 T 1 2 04 0	Ratchet Key	2
13.14	BR 0 062080000 0	Bearing 6208	2
13.15	SH CM C 16 T 1 2 06 0	Shim 65X47.5X1t	2
13.16	SH ZM C 19 T 1 2 05 0	Z-35 Spiral Bevel Gear	1
13.17	CR 0 I080A25t0 0	Internal Circlip, 80X2.5t	2
13.18	SL N 004008010 0	Oil Seal 40X80X10	1
13.19	SH CM C 16 T 1 3 06 0	Key For Transmission Shaft 10X8X55L	2
13.20	SH CM C 16 T 1 3 05 8	Gearbox Coupling Machining	1
13.21	SH ZM C 19 T 1 3 04 9	Transmission Shaft Machining (X4=1018.5)	1
13.22	SH CM C 16 T 1 0 02 0	Gasket For Jackshaft	1
13.23	SH ZM C 19 T 1 3 00 0	Assembling Jackshaft Machining(X4=1018.5)	1
13.24	PG D MSHBSP380 Z	Plug Drain 3/8"	2
13.25	WS 0 CB172101t 0	Washer Copper G 3/8"	2
13.26	BR 0 630800000 0	Bearing 6308 E 1RS	1
13.27	CR 0 I090B30t0 0	Internal Circlip, 90x3t	1
13.28	SL N 004009008 0	Oil Seal 40X90X8	1
13.29	PG B MSRMET120 Z	Air Breather 12 X 1.5	1
13.30	WS 0 CB121601t 0	Washer Copper 12 X 16 X 1t	1
13.31	PG D MSHBSP120 Z	Mounting Plug "1/2" BSPT for Air Breather M12 x 1.5	1
13.32	WS 0 CB212515t 0	Washer Copper G 1/2"	4
13.33	PG D SLHBSP120 Z	Drain Plug BSPT Hex Head Taper Screw plug 1/2"	1
13.34	BO 3 AM080204F B	Bolt Allen M8x1.25x20L-Class 8.8,FT,Black Oxide	4
13.35	BO 3 HM100305F Z	Bolt M10x1.5X30L-Class 8.8,FT,Zinc Plated	8
13.36	BO 3 AM120306F B	Bolt Allen M12x1.75x30L-Class 8.8,FT,Black Oxide	4
13.37	WS 0 SM851402t Z	Washer Spring M8X8.5x2t, Zinc Plated	4
13.38	WS 0 SM111702t B	Washer Spring M10X11x2t, Black Oxide	8
13.39	WS 0 SM131904t B	Washer Spring M12X19.5x4t, Black Oxide	4





Position	Part No	Part Description	Qty
1	SH ZM C 19 P 1 0 00 0	Assembling Mainframe	1
2	SH ZM C 19 P 5 1 00 0	Assembling Arrester 38 Plates	1
3	SH ZM C 19 P 6 1 00 0	Assembling Arrester 26 Plates	1
5	SH ZM C 19 A 0 0 07 0	Inner Side Locking Plate	2
18	SH ZM C 19 P 0 0 02 0	Shield Plate	18
27	SH ZM C 25 A 0 0 01 0	Skid Sole Drive Side	1
28	SH ZM C 25 A 0 0 02 0	Skid Sole Driven Side	1
31	SH ZM C 19 B 2 0 00 0	Assembling Rod	1
32	SH ZM C 19 P 2 0 00 0	Assembling Tie Pipe	1
44	BO 0 GM080104F B	Grub Screw M8X1.25X10L,FT, Back Oxide	4
46	BO 3 HM100254F Z	Bolt M10x1.25X25L-Class 10.9,FT,Zinc Plated	37
47	BO 4 HM100304F Z	Bolt M10x1.25X30L-Class 10.9,FT,Zinc Plated	6
48	BO 4 HM100354F Z	Bolt M10x1.25X35L-Class 10.9,FT,Zinc Plated	4
49	BO 3 HM100255F B	Bolt M10x1.5X25L-Class 8.8,FT,Black Oxide	6
50	BO 4 HM120304F Z	Bolt M12x1.25X30L-Class 10.9,FT,Zinc Plated	16
54	BO 3 HM140405F Z	Bolt M14 x1.5x40L-Class 8.8, FT, Zinc Plated	6
60	NU 4 HM10P408S B	Nut M10x1.25-Class 10.9,Black oxide	47
62	NU 4 HM12N410S Z	Nut M12x1.25- Class 10, Hex Nut ,Zinc Plated	16
65	NU 3 HM14T511S Z	Nut M14x1.5- Class 8, Hex Nut, Zinc Plated	4
71	WS 0 SM111704t B	Washer Spring M10X11x4t, Black Oxide	51
72	WS 0 SM131904t B	Washer Spring M12X19.5x4t, Black Oxide	27



A

Position	Part No	Part Description	Qty
A	CS TT 0 38 T 7 0 00 0	PTO Shaft TT38 X L700 X 6 Spline	1
1	CS TT 0 38 T 2 1 00 0	Assembling Simple Yoke with Inner Tube TT-38	1
1.1	CS TT 0 38 T 1 1 01 0	Simple Yoke For Inner Tube TT-38	1
1.2	CS TT 0 38 T 2 1 02 0	Inner Triangular Tube TT-38	1
1.3	CS TT 0 38 T 1 1 03 0	Dowel Pin For Inner Tube TT-38	1
2	CS TT 0 38 T 2 2 00 0	Assembling Simple Yoke with Outer Tube TT-38	1
2.1	CS TT 0 38 T 1 2 01 0	Simple Yoke For Outer Tube TT-38	1
2.2	CS TT 0 38 T 1 2 02 0	Outer Triangular Tube TT-38	1
2.3	CS TT 0 38 T 1 2 03 0	Dowel Pin For Outer Tube TT-38	1
3	CS TT 0 38 T 1 3 00 0	Assembling Shear Yoke TT-38	1
3.1	CS TT 0 38 T 1 3 01 0	Shear Yoke TT-38	1
3.2	CS TT 0 38 T 1 3 02 0	Shear Yoke Lower TT-38	1
3.3	CS TT 0 38 T 1 3 03 0	Quick Release Pin 6 Spline TT-38	2
3.4	CS TT 0 38 T 1 3 04 0	Spring For Quick Release Pin TT-38	2
4	BB 0 BBOD77000 0	Ball Bearing Día 7.7 mm	24
5	CS TT 0 38 T 1 0 00 0	Assembling Spring Yoke 6 Spline with Quick Release Pin TT-38	1
5.1	CS TT 0 38 T 1 0 01 0	Spring Yoke 6 Spline TT-38	1
5.2	CS TT 0 38 T 1 3 03 0	Quick Release Pin 6 Spline TT-38	2
5.3	CS TT 0 38 T 1 3 04 0	Spring For Quick Release Pin TT-38	2
6	CS TT 0 38 T 1 0 02 0	Universal Joint Cross With Bearing 38 OD	2
6.1	GN 0 A45HMETM8 Z	Grease Nipple M8 Angular 45 deg	2
7	CR 0 I038B15t0 0	Circlip Type -B, 38x1.5t	8
8	GN 0 S00HBSP18 Z	Grease Nipple 1/8" BSP	1
9	CS TT 0 38 T 2 6 00 0	Assembling Inner Guard Cover TT-38	1
9.1	CS TT 0 38 T 1 6 01 0	Inner Tube Holder TT-38	1
9.2	CS TT 0 38 T 2 6 02 0	Guard Cover Inner Tube TT-38	1
9.3	CS TT 0 38 T 1 6 03 0	Guard Cover Cap TT-38	1
9.4	CS TT 0 38 T 1 6 04 0	Flexible Yoke Cover TT-38	1
10	CS TT 0 38 T 2 7 00 0	Assembling Outer Guard Cover TT-38	1
10.1	CS TT 0 38 T 1 7 01 0	Outer Tube Holder TT-38	1
10.2	CS TT 0 38 T 2 7 02 0	Guard Cover Outer Tube TT-38	1
10.3	CS TT 0 38 T 1 6 03 0	Guard Cover Cap TT-38	1
10.4	CS TT 0 38 T 1 6 04 0	Flexible Yoke Cover TT-38	1
11	CS TT 0 38 T 1 0 02 0	Chain For PTO Shaft TT-38	1
12	NU 3 HM08T406S Z	Nut M8X1.25 - Class 8, Torque Prevailing, Zinc Plated	4
13	BO 4 EM100655H B	Bolt Shear M10x1.5X65L-Class 10.9,HT,Black Oxide	1
14	NU 3 HM10T508S Z	Nut M10X1.5 - Class 8, Nylock Inserted, Zinc Plated	1



Position	Part No	Part Description	Qty
81	AD A TL1120000 0	Thread Locker Anabond 112	5ml
82	AD A BR4120000 0	Bearing Retainer Anabond 412	3ml
83	AD S GS6660000 0	Silicon Sealant Anabond 666	10 g
86	SL P P00000012 0	P.T.F.E. Thread Seal Tape	1m
87	TL 0 RS2224000 G	Ring Spanner 22/24	1
88	TL 0 RS2426000 G	Ring Spanner 24/26	1
89	TL 0 FS2426000 G	Flat Spanner24/26	1
90	TL 0 RS1819000 G	Ring Spanner 18/19	1
91	TL 0 FS1819000 G	Flat Spanner18/19	1
92	TL 0 RS1617000 G	Ring Spanner 16/17	1
93	TL 0 FS1617000 G	Flat Spanner16/17	1
94	TL 0 AL0600000 G	Allen Key 6mm	1